

SPARK7111 Upgrade Guide

Author	Date: 2010-10-25
Review:	Date:
Approve:	Date:

Category

Category	2
1 History.....	3
2 Spark7111 Upgrade Guide- Uboot	4
2.1 Functions Overview.....	4
2.2 How to Upgrade Enigma2	5
2.2.1 Upgrade Enigma2 by USB.....	6
2.2.2 Upgrade Enigma2 by TFTP	7
2.3 How to Upgrade Spark.....	9
2.3.1 Upgrade Spark by USB.....	10
2.3.2 Upgrade Spark by TFTP	10
2.4 How to switch from Spark to Enigma2	13
2.5 How to switch from Enigma2 to spark	13
2.6 How to Upgrade Uboot by RS232	13
3 Spark7111 Upgrade Guide- Application	16
3.1 Functions Overview.....	16
3.2 Upgrade Option [Dbase]	17
3.3 Upgrade Option [App]	17
3.4 Upgrade Option [App+Dbase].....	18
3.5 Upgrade Option [System].....	18
4 Plugin Upgrade Guide.....	19
4.1 Functions Notice!	19
4.2 How to Upgrade plugin by USB.....	19
4.3 How to Upgrade plugin by FTP	19
4.4 How to config plugin.....	20

1 History

Date	Version	Modification	Author
2010-10-25	1 . 0	Create Corresponds to SPARK7111 Software Version 1.1.** (etc: 1.1.16)	

2 Spark7111 Upgrade Guide- Uboot

Please be aware of following characters written in Red color.

2.1 Functions Overview

In SPARK7111 U-boot, we can:

- Upgrade entire Enigma2 system
- Upgrade entire Spark system
- Upgrade U-boot itself by RS232
- switch default booting system between SPARK and Enigma2

Front panel functions Overview:

Key Combination	Function
[OK](press 5 sec) + [Down] + [OK]	Select engma2 as current system
[OK](press 5 sec) + [Up] + [OK]	Select Spark as current system
[OK](press 5 sec) + [Right]	Upgrade Current system By USB or TFTP
[OK](press 5 sec) + [Left]	Upgrade U-boot By RS232

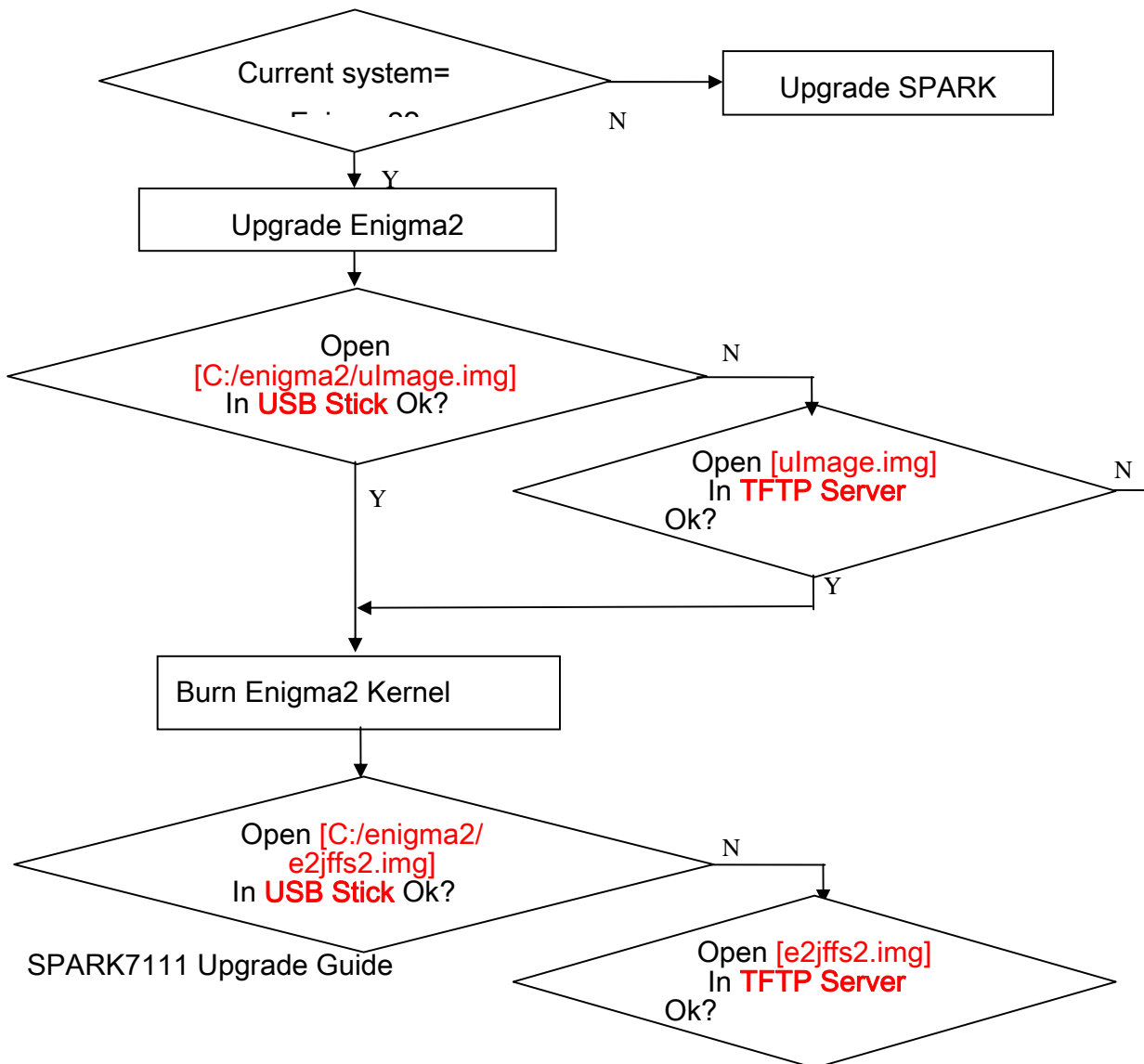
Upgrade Overview:

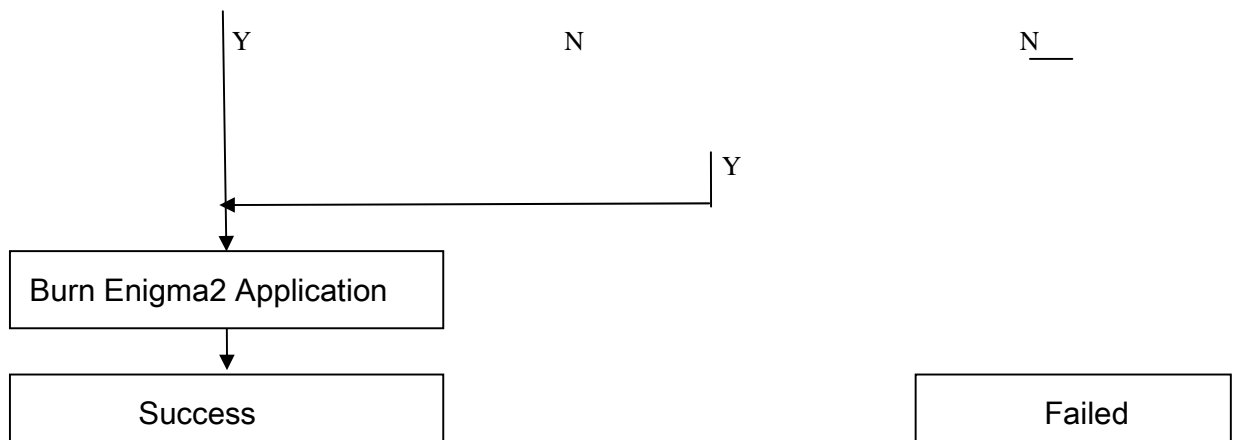
host	target	Protocol/Way	Auto/Manual	Upgrade time	How to
SPARK	Uboot	RS232	Manual	1.5 min	By front panel

Uboot	Enigma2	USB	Manual	2 min	By front panel
		TFTP..	Manual	2 min	By front panel
	Spark	USB	Manual	4 min	By front panel
		TFTP..	Manual	4 min	By front panel

2.2 How to Upgrade Enigma2

Upgrade Enigma2 flow:





2.2.1 Upgrade Enigma2 by USB

Preparation:

1. We only recommend **Kingston USB stick**, we **don't support USB hard disk**
2. Please make sure your USB stick only have 1 partition and the file system is FAT32
3. Set default booting system to **[enigma2]**.

Upgrade Step:

1. Make sure **[C:/engima2]** is exist, if not, please create this folder.
2. copy **[ulmage]** and **[e2jffs2.img]** to **[C:/engima2]**
3. Connect USB stick to STB
4. Keep Pressing [OK] Button in Front Panel, then power on STB.
5. After 5 seconds, you will see [Forc] in LED, release [OK] button and press [Right] Button.
6. if everything OK, You will see [U LD] shining in LED
7. if upgrade success, You will see [SUCC] and STB reboot automatically

If upgrade not finishes in 5 minutes, then there must be something wrong, please check your configuration and re-try.

2.2.2 Upgrade Enigma2 by TFTP

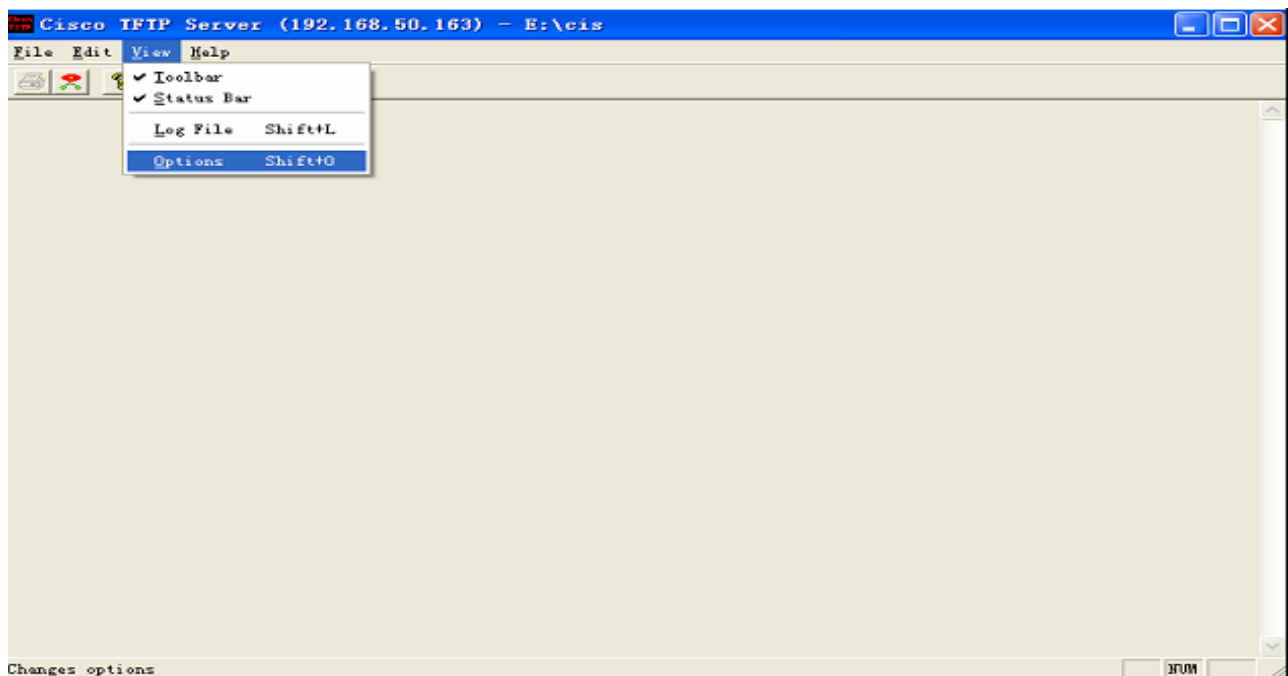
Since we have some restrictions and can not support all kinds of USB stick, we provide another option (TFTP) to upgrade Enigma2.

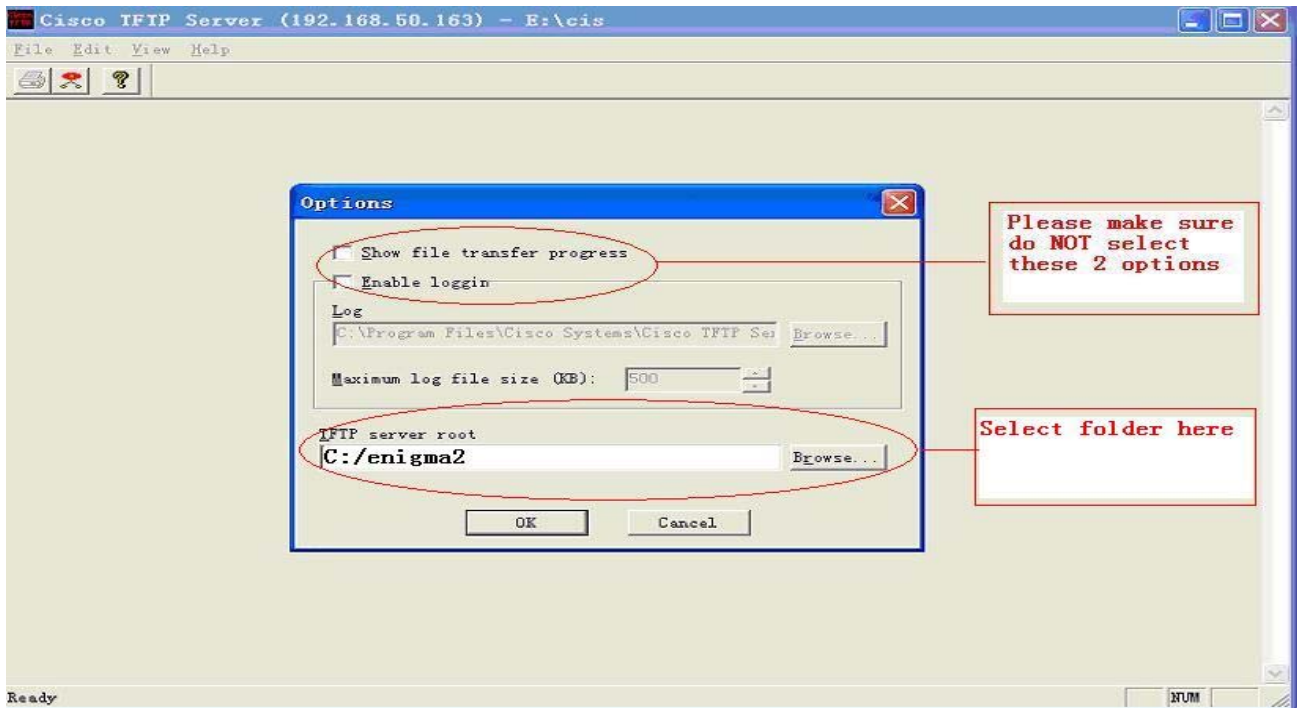
Preparation:

1. Install TFTP tools [csicotftp11.rar] to your PC
2. Set your PC IP addr to [192.168.40.19]
3. connect your PC to STB by LAN, now we only support LAN, do not support WLAN
4. Set default booting system to [enigma2]

Upgrade Step:

1. copy [ulmage] and [e2jffs2.img] to any folder of your PC, for example [C:/engima2]
2. select folder in TFTP tools:





3. Keep Pressing [OK] Button in Front Panel, then power on STB.
4. After 5 seconds you will see [Forc] in LED, release [OK] button and press [Right] Button.
5. if everything OK, You will see [T LD] shining in LED and you will see some debug information in TFTP Server, like

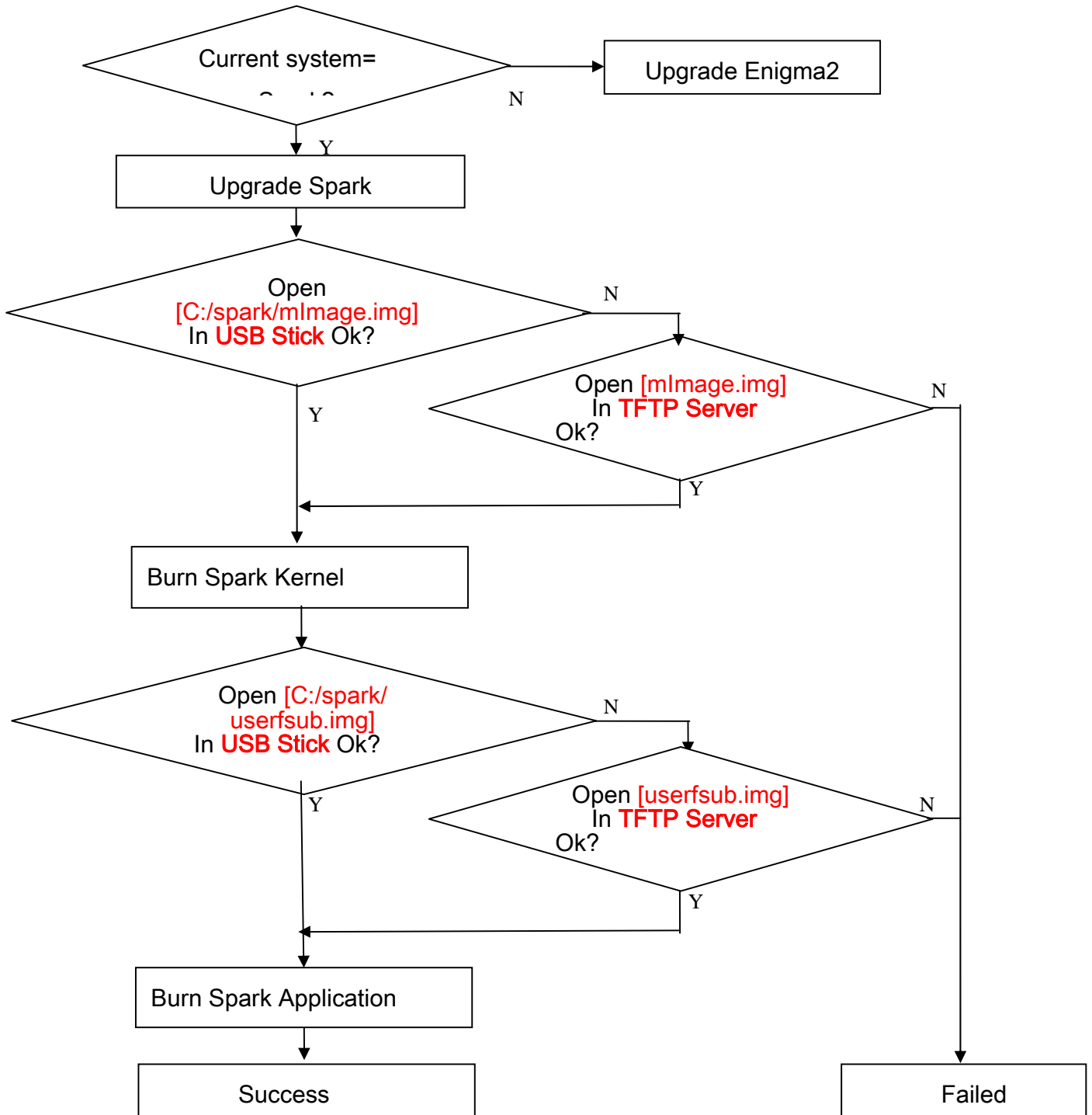
“ Mon Oct 25 14:02:36 2010: Sending 'ulmage' file to 192.168.40.19 in binary mode
 Mon Oct 25 14:02:39 2010: Successful.
 Mon Oct 25 14:02:50 2010: Sending 'e2jffs2.img' file to 192.168.40.19 in binary mode
 Mon Oct 25 14:03:33 2010: Successful.”

6. if upgrade success, You will see [SUCC] and STB reboot automatically

If upgrade not finishes in 5 minutes, then there must be something wrong, please check your configuration and re-try.

2.3 How to Upgrade Spark

Upgrade Spark flow:



2.3.1 Upgrade Spark by USB

Preparation:

1. We only recommend **Kingston USB stick**, we **don't support USB hard disk**
2. Please make sure your USB stick only have 1 partition and the file system is FAT32
3. Set default booting system to **[spark]**.

Upgrade Step:

1. Make sure **[C:/spark]** is exist, if not, please create this folder.
2. copy **[mlImage]** and **[userfsb.img]** to **[C:/spark]**
3. Connect USB stick to STB
4. Keep Pressing [OK] Button in Front Panel, then power on STB.
5. After 5 seconds, you will see [Forc] in LED, release [OK] button and press [Right] Button.
6. if everything OK, You will see [U LD] shining in LED
7. if upgrade success, You will see [SUCC] and STB reboot automatically
8. If upgrade not finishes in 5 minutes, then there must be something wrong, please check your configuration and re-try.

2.3.2 Upgrade Spark by TFTP

Since we have some restrictions and can not support all kinds of USB stick, we provide another option (TFTP) to upgrade Enigma2/Spark.

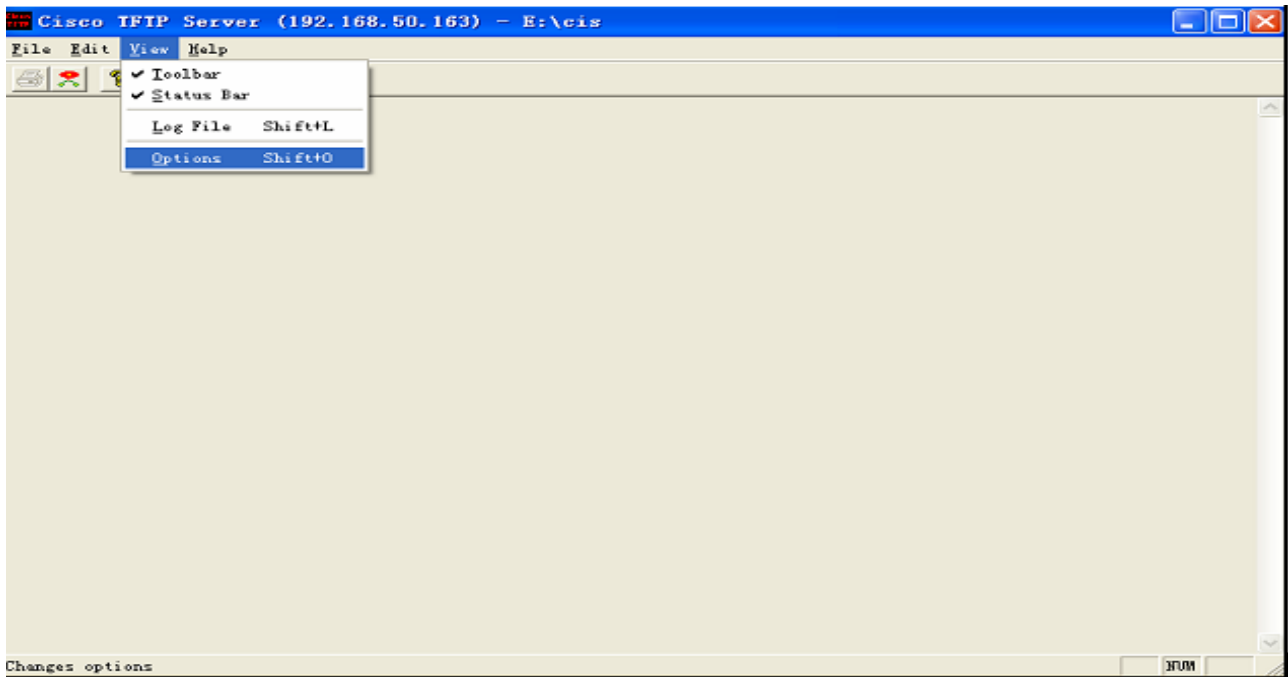
Preparation:

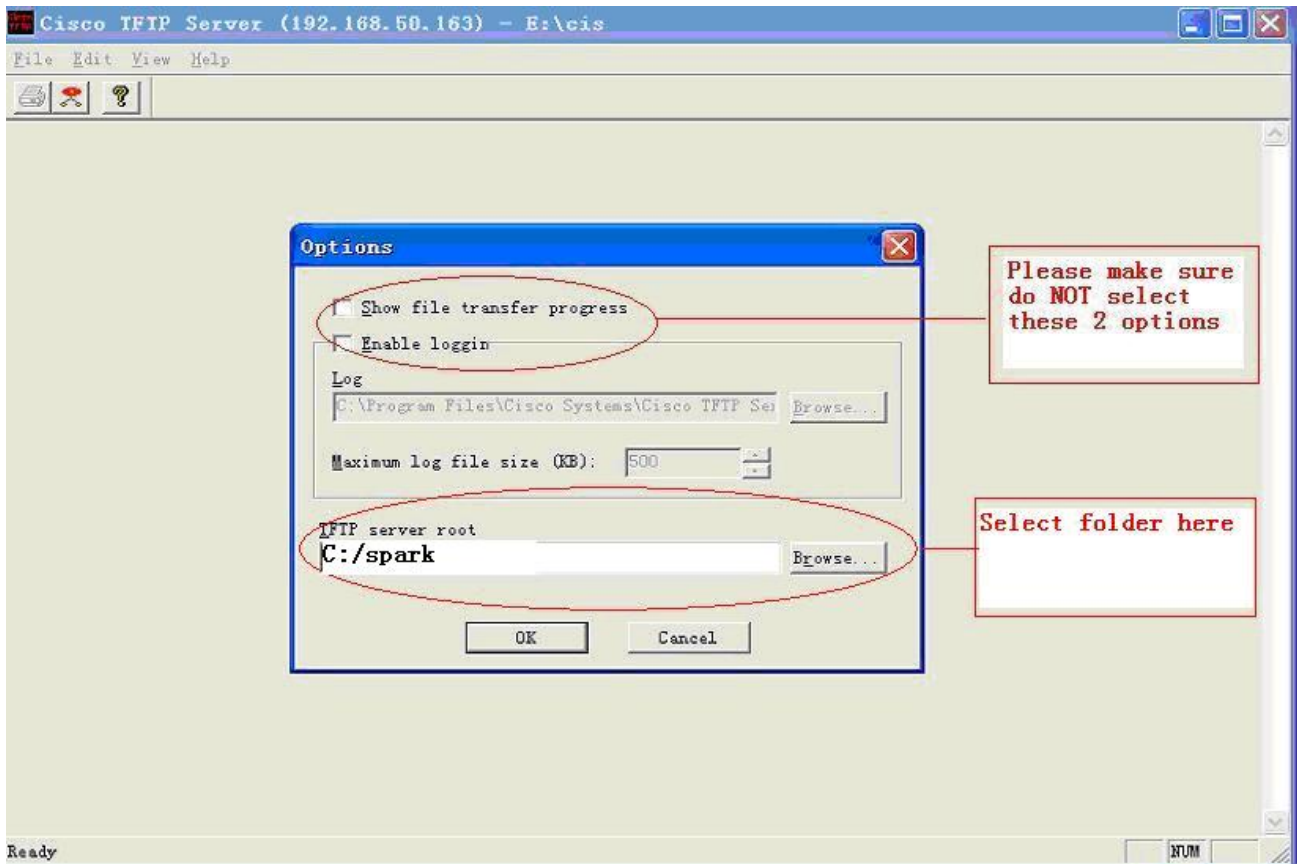
1. Install TFTP tools [csicotftp11.rar] to your PC
2. Set your PC IP addr to **[192.168.40.19]**

3. connect your PC to STB by LAN, now we only support LAN, do not support WLAN
4. Set default booting system to **[spark]**

Upgrade Step:

1. copy **[mImage]** and **[userfsb.img]** to any folder of your PC, for example **[C:/spark]**
2. select folder in TFTP tools:





3. Keep Pressing [OK] Button in Front Panel, then power on STB.
4. After 5 seconds you will see [Forc] in LED, release [OK] button and press [Right] Button.
5. if everything OK, You will see [T LD] shining in LED and you will see some debug information in TFTP Server, like

“ Mon Oct 25 14:02:36 2010: Sending 'mlmage' file to 192.168.40.19 in binary mode

Mon Oct 25 14:02:39 2010: Successful.

Mon Oct 25 14:02:50 2010: Sending 'userfsub.img' file to 192.168.40.19 in binary mode

Mon Oct 25 14:03:33 2010: Successful.”
6. if upgrade success, You will see [SUCC] and STB reboot automatically

If upgrade not finishes in 5 minutes, then there must be something wrong, please check your configuration and re-try.

2.4 How to switch from Spark to Enigma2

1. Keep Pressing [OK] Button in Front Panel, then power on STB.
2. After 5 seconds, you will see [Forc] in LED, release [OK] button and Press [Down] button you will see [EN16] in LED
3. Press [OK] to confirm your selection, STB will reboot automatically

2.5 How to switch from Enigma2 to spark

1. Keep Pressing [OK] Button in Front Panel, then power on STB.
2. After 5 seconds, you will see [Forc] in LED, release [OK] button and Press [UP] button you will see [SPAR] in LED
3. Press [OK] to confirm your selection, STB will reboot automatically

2.6 How to Upgrade Uboot by RS232

Preparation:

1. Open [HyperTerminal] and set default parameters

Symbol rate: [1152000]

Data bits: [8]

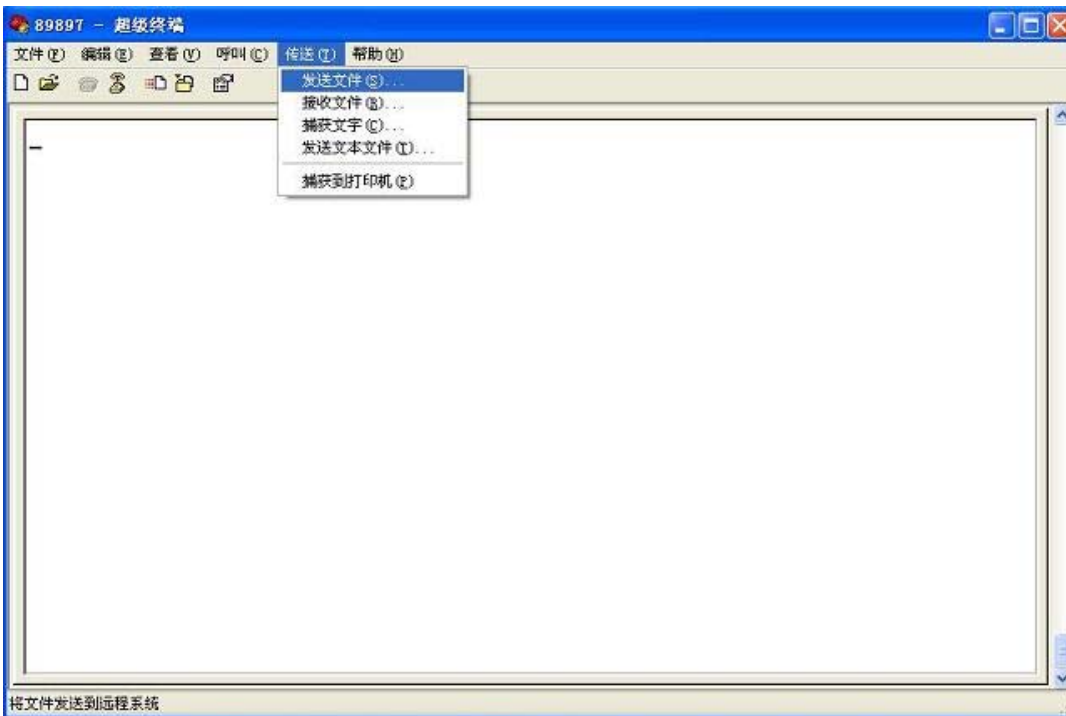
Parity: [None]

Stop Bits: [1]

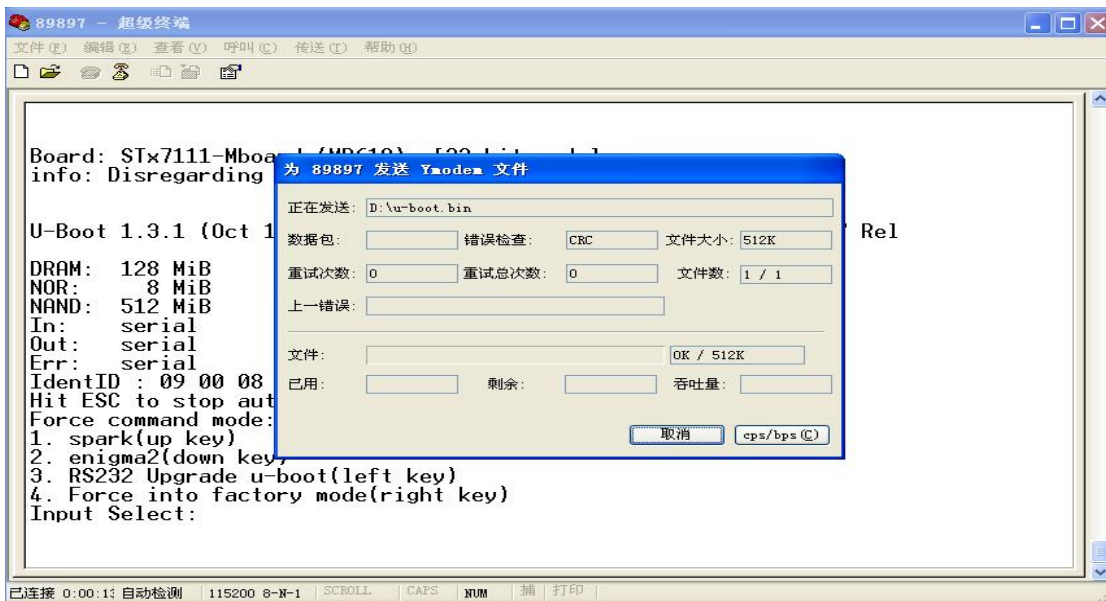
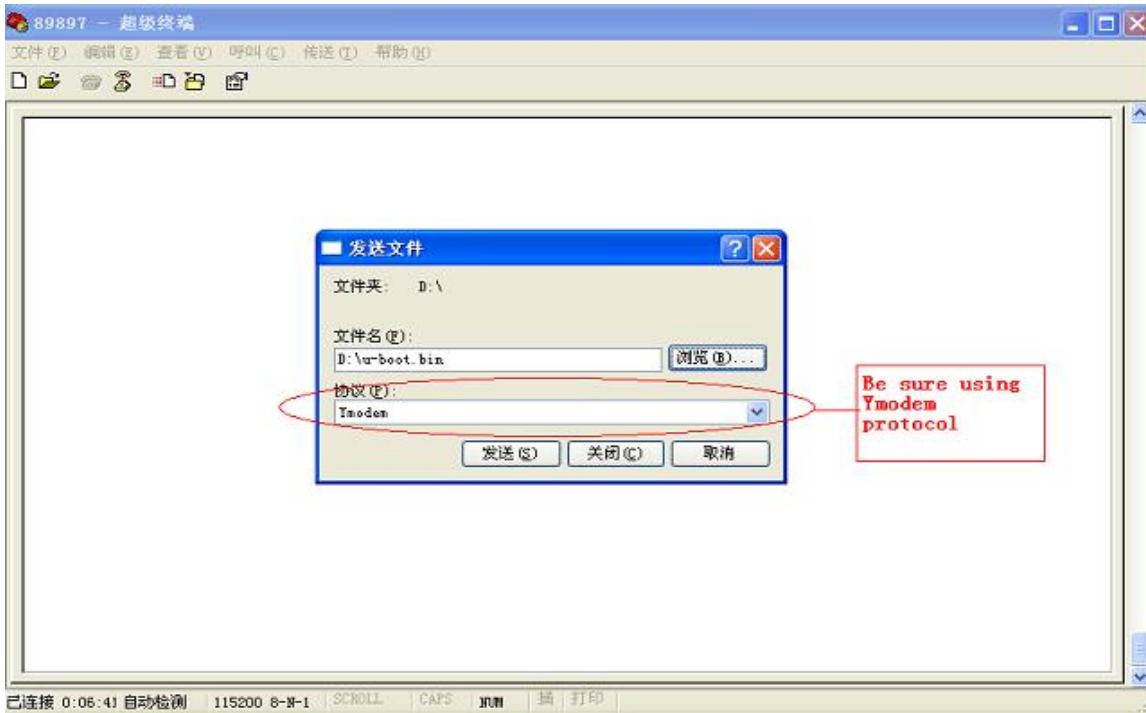
Data Flow Control: [None]



2. Select [Transfer/File Transfer] Option



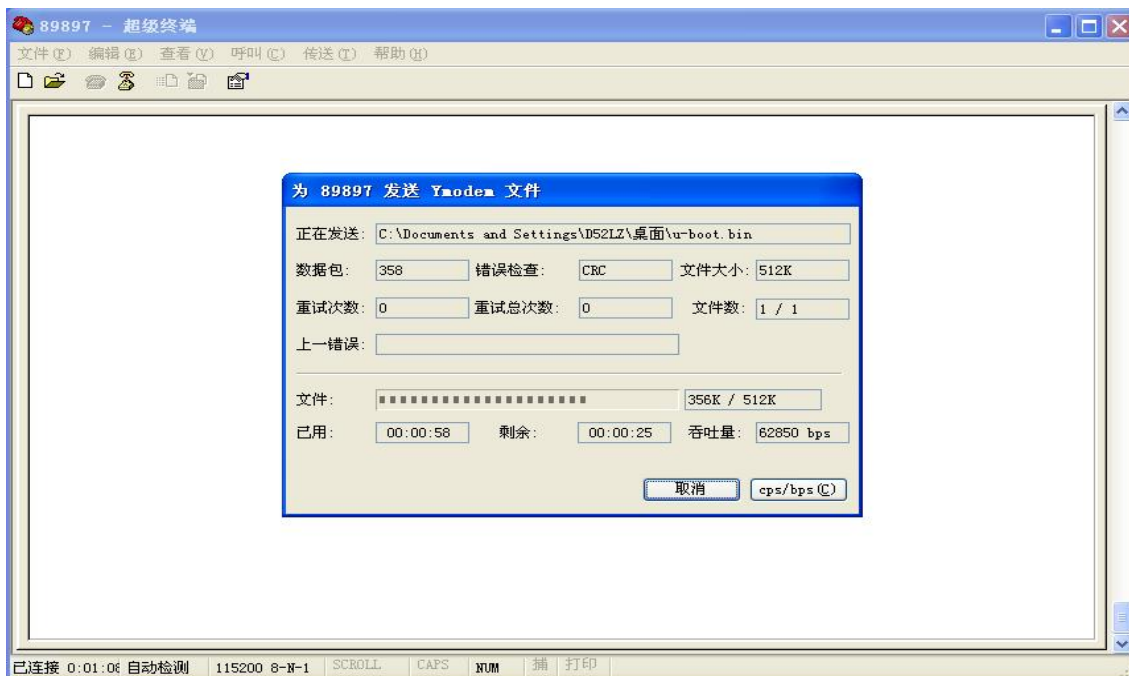
3. Select [u-boot.bin] and use [Ymodem] Option, send file



Upgrade Step:

1. Keep Pressing [OK] Button in Front Panel, then power on STB.
2. After 5 seconds you will see [Forc] in LED, release [OK] button and press [Left] Button.

3. If everything is ok, in STB you will see [LOAD] shinning in LED. In HyperTerminal, you will see:



3 Spark7111 Upgrade Guide- Application

3.1 Functions Overview

In SPARK7111 Application, we can:

- Upgrade Spark Dbase, System can recover if power down
- Upgrade Spark Application, System can recover if power down
- Upgrade Spark Application+Dbase, System can recover if power down
- Upgrade Spark whole system (hidden), System can NOT recover if power down

Upgrade Overview:

host	modules	Protocol/Way	Auto/Manual	Upgrade time	How to
------	---------	--------------	-------------	--------------	--------

Spark Application	App	USB	Manual	2 min	By Menu
		USB	Auto	2 min	Auto detect C:/spark
		SPARKONLINE	Auto	Depends on internet speed	Auto detect new version in spark online server
	Dbase	USB	Manual	1 min	By Menu
		SPARKONLINE	Manual	Depends on internet speed	By Menu
	App+Database	USB	Manual	2 min	By Menu
	system	USB	Manual	4 min	By hidden Menu

3.2 Upgrade Option [Dbase]

Upgrade [Dbase] Option only includes channel list, Tp list, Satellite List.

Do not include User Preference Data (STB IP, default language etc)

Upgrade Step:

3.3 Upgrade Option [App]

Upgrade [App] Option only includes Application code. Do not include Dbase or User preference data.

Upgrade Step:

3.4 Upgrade Option [App+Dbase]

Upgrade [App+Dbase] Option only includes Application code, Dbase and User preference data.

Upgrade Step:

3.5 Upgrade Option [System]

Upgrade [System] Option includes all spark system as well as uboot.

Upgrade Step:

1. Enter into Upgrade menu
2. Select Upgrade package
3. Press [EPG],[5], [2], [1], [0] to activate upgrade.

Capture place here

4 Plugin Upgrade Guide

4.1 Functions Notice!

1. make sure conax is disable in system/basic setting/conditional access/conax
2. Now only support camd.socket mode and Linux dvb API V3, so make sure set mgcamd to box type 6.
3. Now can only descramble one channel in mgcamd, which means you can NOT record one channel and watch the other channel.
4. Now can support multi-channel in oscamd, which means you can record one and watch the other one.
- 5 . Make sure don't open two clients at the same time. For example, don't start mgcamd and oscamd at the same time.

4.2 How to Upgrade plugin by USB

Upgrade Step:

1. Copy plugin folder to the root directory of first partition of USB stick (like c: /plugin).
2. Connect USB stick to stb. Stb shall prompt a message to user to upgrade plugin. Select yes to upgrade

4.3 How to Upgrade plugin by FTP

Upgrade Step:

1. Set your STB IP addr in system/Net setting menu
2. connect your PC to STB by LAN, now we only support LAN, do not support WLAN
3. Use ftp to telnet stb and copy plugin folder to /root.

4.4 How to config plugin

Mgcamd configuration:

1. Ftp to stb and config mgcamd in /var/keys
2. Setting like this C: server addr server port account password
3. Better wait for sometime (10-20 seconds) because stb may need to flush cache data to nand flash.
4. Restart mgcamd

Oscamd configuration:

1. Ftp to stb and config oscamd in /var/tuxbox/config
2. Setting like this
 - Device = server addr, server port
 - Account = account name, password
3. Better wait for sometime (10-20 seconds) because stb may need to flush cache data to nand flash.
4. Restart oscamd